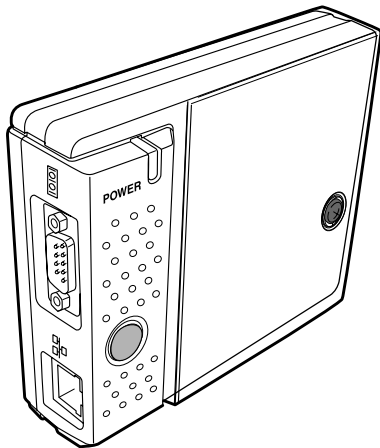




# *PJ-Net Organizer*



## **PJ-Net Organizer Model No. POA-LN01**

**Preparation**

**Installation**

**Basic Setting and Operation**

**Controlling the Monitor**

**Serial Port Use**

**Appendix**

### **INSTALLATION and OPERATION of the PJ-Net Organizer**

This PJ-Net Organizer is an optional product to control and set up a monitor via a network. Attach this product to the monitor and connect a network cable. By accessing the connected monitor using the web browser on your computer, the monitor can be controlled and set up remotely.

This product is only used for Monitors that have a terminal for the PJ-Net Organizer.

This manual explains the installation of the PJ-Net Organizer and its operation.

# Preparation

---

## Compliance

### Federal Communication Commission Notice

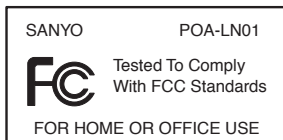
This equipment has been tested and found to comply with the limits for a Class B digital device, pursuant to part 15 of the FCC Rules. These limits are designed to provide reasonable protection against harmful interference in a residential installation. This equipment generates, uses and can radiate radio frequency energy and, if not installed and used in accordance with the instructions, may cause harmful interference to radio communications. However, there is no guarantee that interference will not occur in a particular installation. If this equipment causes harmful interference to radio or television reception which can be determined by turning the equipment off and on, the user is encouraged to try to correct the interference by one or more of the following measures:

- Reorient or relocate the receiving antenna.
- Increase the separation between the equipment and receiver.
- Connect the equipment into an outlet on a circuit different from that to which the receiver is connected.
- Consult the dealer or an experienced radio/TV technician for help.

Use of shielded cable is required to comply with class B limits in Subpart B of Part 15 of FCC Rules.

Do not make any changes or modifications to the equipment unless otherwise specified in the manual. If such changes or modifications should be made, you could be required to stop operation of the equipment.

Model Numbers : POA-LN01  
Trade Name : Sanyo  
Responsible party : SANYO FISHER COMPANY  
Address : 21605 Plummer Street, Chatsworth, California 91311  
Telephone No. : (818)998-7322



### Trademark

Ethernet is a registered trademark of Xerox Corporation. Microsoft, Windows, are registered trademarks of Microsoft Corporation. Internet Explorer is a registered trademark of Microsoft Corporation. JavaScript is a registered trademark of Sun Microsystems Inc. Adobe and Adobe Flash player are registered trademarks of Adobe systems Inc.

Other product or brand names in this manual are registered trademarks or trademarks of their respective owners.

\* Unauthorized use of a part or whole of the contents in this manual is prohibited.

\* The contents of this manual are subject to change without notice.

## Expression/Abbreviation

The following abbreviations may appear in this manual:

- Windows 2000, Windows XP      ➔ Windows

In some cases, the “PJ-Net Organizer” is explained as “this product” or “Network Board” in this manual. The word “monitor” found in this manual means “LCD monitor provided with PJ-Net Organizer” unless otherwise noted.

### Use of this manual

This manual does not provide the description of basic operation and functions for computer, web browser, monitor and network. For instructions about each piece of equipment or application software, please refer to the respective booklet.



#### CAUTION ON USE IN NETWORK

- When you receive an alert e-mail from the monitor, you must check the monitor immediately. Fire or accident may result if the monitor is used in an abnormal condition.
- When you install the monitor at remote location and use it through the network, you must perform the safety inspections periodically. In this case you must pay attention to the change of environment in which you installed the monitor. It may cause fire or an accident depending on the change of environment.

#### CAUTION

SANYO Electric Co. Ltd assumes no responsibility for the loss or damage of data or damage of the computer caused by use of this product.

# Contents

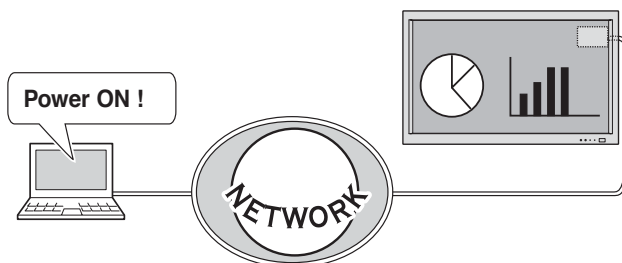
Features .....	5	<b>4 Serial Port Use .....</b>	<b>39</b>
Recommended Operating Environment .....	6	Example of Connection .....	40
<b>1 Installation .....</b>	<b>7</b>	Specification and Setting of RS232C Terminal .....	40
Flow of installation .....	8	Command for controlling the monitor .....	41
Name and function of each part .....	9	How to set network configuration on network board to default .....	42
[1] Mounting .....	10	<b>5 Appendix .....</b>	<b>43</b>
[2] Connection of LAN cable .....	12	Examples of Connection .....	44
[3] Network configuration .....	13	Direct connection .....	44
Configure the network with the computer .....	14	The gateway (Router) installed in the network .....	45
Completing of installation .....	15	Web browser setting .....	46
Flash Player .....	16	Active Script/JavaScript enable .....	46
Configure the network of computer .....	17	Proxy setting .....	46
Windows 2000 .....	17	Examples: OS/Browsers .....	47
Windows XP .....	18	Windows XP Professional .....	47
Notice about system construction .....	19	Product specification .....	49
<b>2 Basic Setting and Operation .....</b>	<b>21</b>	Port Specification .....	50
Login the setting page of the monitor .....	22	MAC Address .....	50
1 Enter the IP address .....	22		
2 Login .....	22		
3 Display of setting page .....	23		
Initial Settings .....	24		
Password Setting .....	24		
Network Configuration .....	25		
1 Configure the network .....	25		
2 Setting the model ID .....	25		
E-mail Setting .....	26		
1 E-mail Setting .....	26		
2 Mail Check and Delete .....	27		
3 Option .....	27		
Examples: Type and contents of alert mail .....	28		
SNMP Setting .....	29		
1 LCD Information .....	29		
2 Trap Send .....	29		
3 Trap Check and Delete .....	30		
4 Trap Option .....	30		
<b>3 Controlling the Monitor .....</b>	<b>31</b>		
Check the status of monitor .....	32		
1 Status 1 .....	32		
2 Status 2 .....	33		
Control the monitor .....	34		
1 Power .....	34		
2 Input .....	35		
3 Wide Mode .....	35		
4 Other 1 .....	36		
5 Other 2 .....	36		
Make a memo .....	37		
Use other command .....	37		



## Features

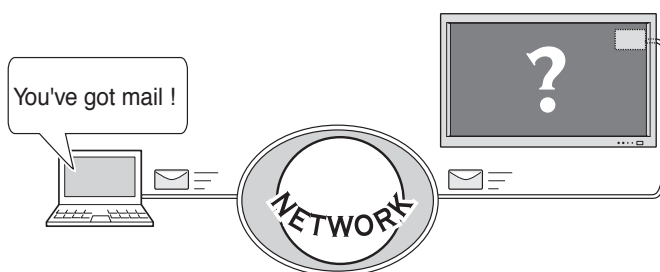
### Web Management function

With this function, you can watch monitor functions such as power status, input mode, signal condition, monitor-use time, etc. through the network by using the web browser installed on your computer.



### E-Mail Alert function

Monitor (PJ-Net Organizer) sends messages to the registered e-mail addresses when a power failure occurs with the monitor. In this message, it describes how to solve the cause of the problems. You can take efficient action for quick recovery.



## Recommended Operating Environment

To perform the management and setting up the monitor using this product, the environment described below is required.

<b>Operating System</b>	Windows 2000 sp4 or later Windows XP sp2 or later
<b>Web Browser*</b>	Internet Explorer version 6.0 or 7.0  * Used to control and set up the monitor. The layout of pages in the browser may slightly differ from each type of application or operating system you use.
<b>Plug-Ins</b>	Adobe Flash Player version 9,0, 28,0 or later
<b>Computer Environment</b>	The computer must provide a 10Base-T or 100Base-TX network card.
<b>Network Environment</b>	Network must handle Ethernet correctly and accept TCP/IP.
<b>Internet Mailer*</b>	- Microsoft Outlook                      - Microsoft OutlookExpress  * Required the internet e-mail application software to receive an e-mail alert sent from this product. If you do not use the function E-mail Alert, this application is not required.

## The limitation of connection between this product and Hub or Computer

Suitable LAN cables are limited by length and type as follows;

Connection	Type of usable LAN cable	Maximum length
PJ-Net Organizer - Hub	UTP Straight Cable with category 3 or 5	100m
PJ-Net Organizer - Computer	UTP Cross Cable with category 3 or 5	100m

---

✎ Category of LAN cable indicates the cable quality. Normally, cable with category 3 or 5 is used for 10Base-T network and cable with category 5 is used for 100Base-TX network.

✎ There may be other limitations depending on your network environment or LAN specification. Please contact your network administrator for further details.

# Installation

---

# Installation

---

## Flow of installation

The following are instructions for attaching this product to the monitor and connecting it to the network. Please review the entire procedure to become familiar with it.

### **1** Check package (p.9)

Please check the contents of a package. This product contains a network board, and an owner's manual (this manual). Also please check the name and function of each part.

### **2** Installation (p.10-12)

1. Mount this product onto the monitor and connect the interface cable between this product and the monitor.
2. Set the option switch on the monitor to down (Net-Organizer mode).
3. Connect the LAN cable and join it to the network.

### **3** Network configuration (p.13-19)

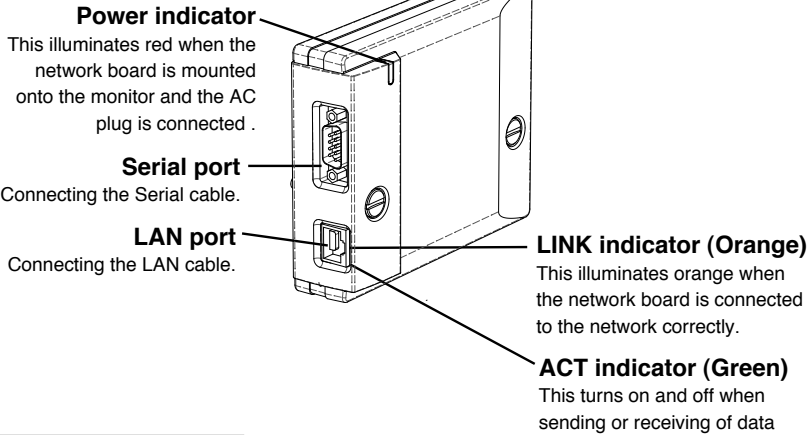
Configure the network with the computer.

**Setting up is completed.**

The preparation is completed to control the monitor connected to the network. At next step, set up and control the monitor via the network by using the web browser installed on your computer. Please see "Basic setting and operation" on page 21.

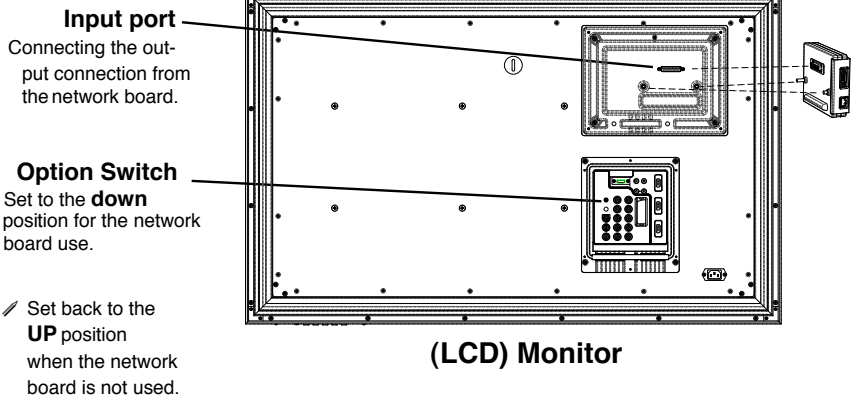
## Name and function of each part

### Network Board



### Monitor

#### (Rear Terminal of Monitor)

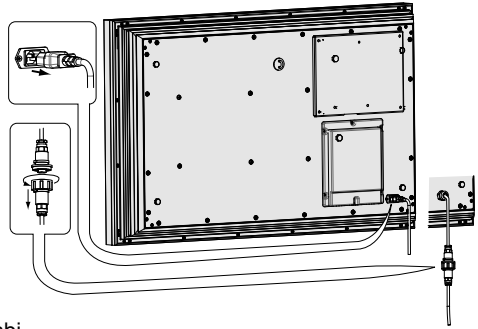


**Caution**

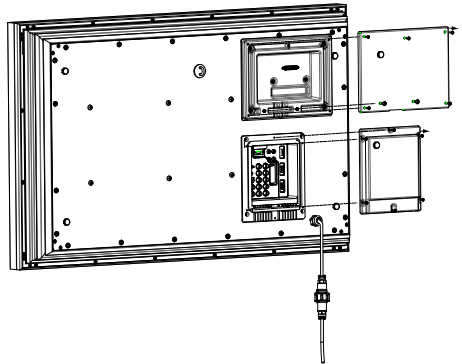
Do not touch the connector. It may damage the product.

## [1] Mounting

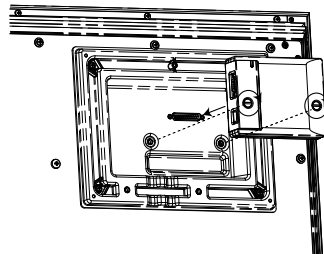
- 1** Disconnect the AC plug from the monitor.



- 2** Remove the screws on the back of the cabinet, and then remove the terminal covers.



- 3** Insert the network board into the monitor, and fix it with the screws.

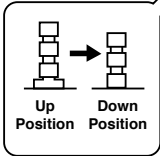


---

**Caution**

- ✓ The AC cord must be disconnected from AC power outlet when mounting or removing this product. It may damage the product.
- ✓ Do not connect the AC cord until after connecting the LAN cable and computer.

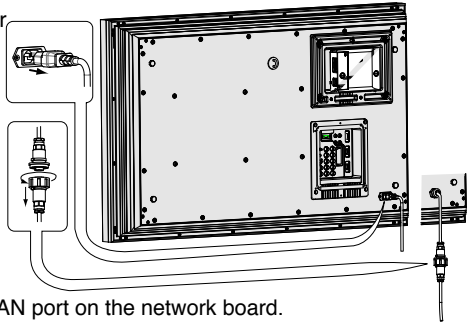
✎ Cannot use the serial port of the monitor in this position. Set back to the **UP** position when the network board is not used.



## [2] Connection of LAN cable

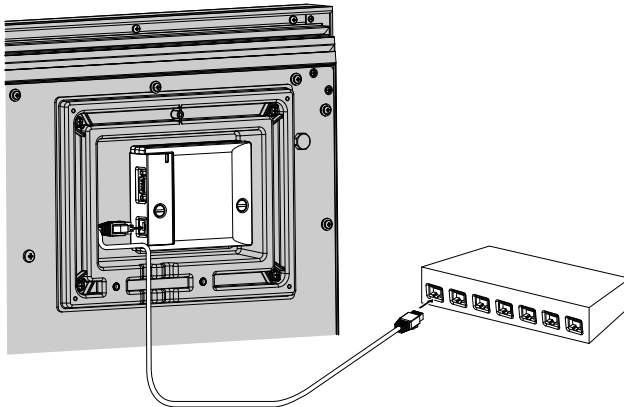
To connect to the network, it is required to use the UTP (Unshielded Twisted Pair) straight cable with RJ-45 plug. There are two different types of cables depending on whether the network is constructed with 10Base-T or 100Base-TX. Prepare the Hub (10Base-T or 100Base-TX) to distribute the network cable.

- 1** Disconnect the AC plug from the monitor



- 2** Connect the UTP straight cable to the LAN port on the network board.

- 3** Connect the UTP straight cable to the hub.



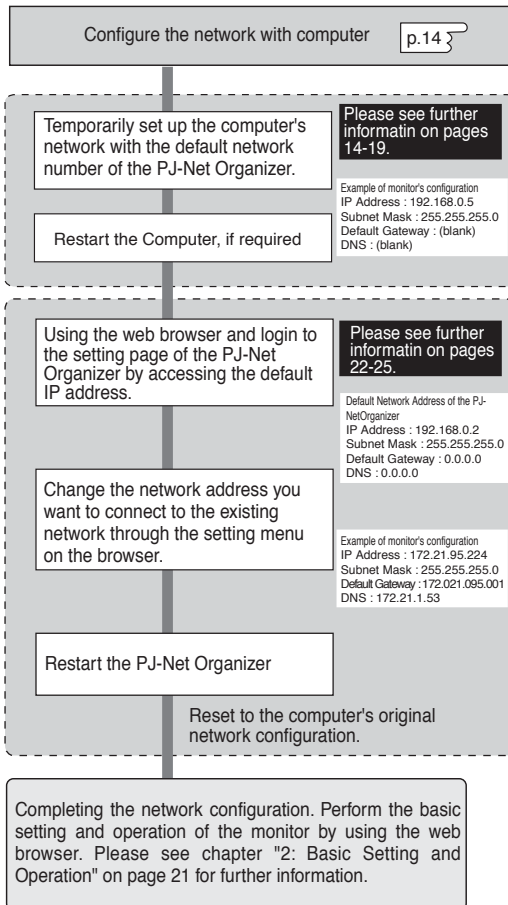
- 
- ✓ The AC cord must be disconnected from AC power outlet when connecting the cable. It may damage the product.
  - ✓ Use the **UTP cross cable** when you connect the computer and monitor directly not using the hub.
  - ✓ When you connect the monitor into the 10Base-T network, use cable with category 3 or 5. When you connect the monitor into the 100Base-TX network, use cable with category 5.
  - ✓ The length of cable between hub and monitor should be less than 100m.



### [3] Network configuration

When you connect a monitor to a network, the network number of monitor must be the same as the network you intend to connect. You should configure monitor's network first. Make sure that the monitor is connected to the network correctly. To configure the network, use the computer. Refer to the chart below.

#### Procedure of Connecting the monitor to the network



# Configure the network with the computer

This example explains how to set the following configuration.

IP Address	: 172.21.95.224
Subnet Mask	: 255.255.255.0
Default Gateway	: 172.21.95.1
DNS	: 172.21.1.53



The default network configuration is set as follows.

IP Address	: 192.168.0.2
Subnet Mask	: 255.255.255.0
Default Gateway	: 0.0.0.0
DNS	: 0.0.0.0



Make sure that the monitor is connected to the network and then connect the AC cord to the outlet.

- 1** Temporarily\*<sup>1</sup> set up your computer network configuration to the same IP network number as the PJ-Net Organizer. For example, change your computer network configuration as follows and restart the computer.

IP Address	: 192.168.0.5
Subnet Mask	: 255.255.255.0
Default Gateway	: (blank)
DNS	: (blank)



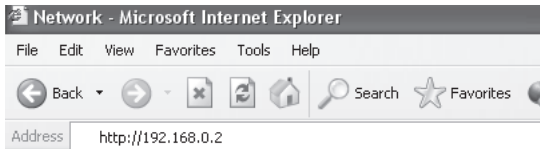
The network configuration of computer differs depending on each network environment or your computer. For further information, please see the chapter “Configure the network of computer” on page 17.

---

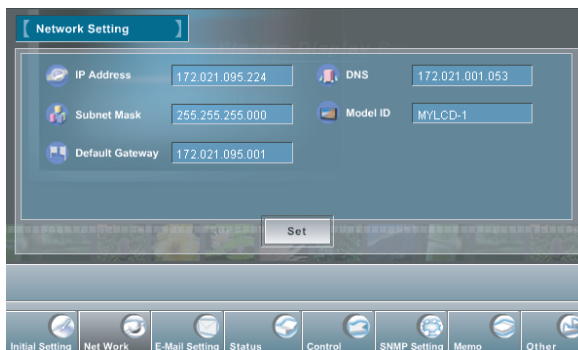
\*<sup>1</sup> Change your computer's network configuration temporarily. After completing the set up for the monitor, you must set up again to the original network configuration for your computer. It is recommended to make a note of those network settings.

## 2 Configure the network of the monitor by using the web browser.

1. Enter the IP address of the monitor as the URL. The login page will be displayed and login. For further information, please see chapter "2: Basic Setting and Operation" on page 21.



2. Configure the network through the setting page on the browser. For further information, please see chapter "Network Configuration" on page 25.



## Completing of installation

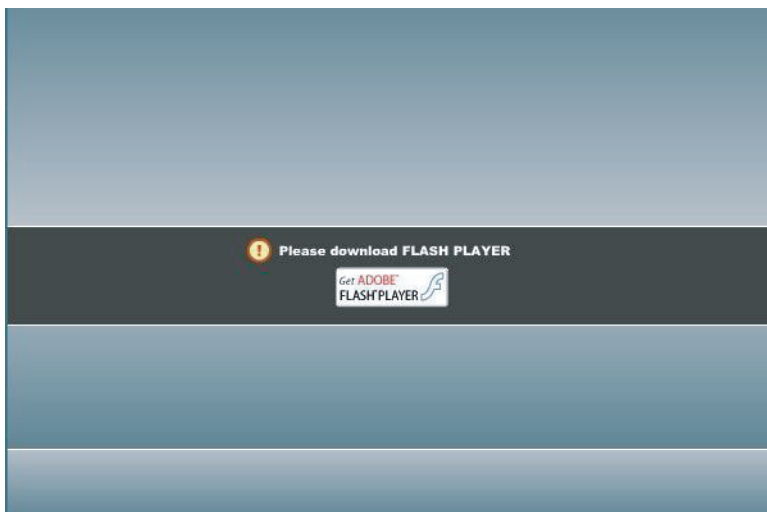
Now the installation is completed. The IP address of this monitor has been set to "172.21.95.224". You must reset the network configuration of the computer to the original and restart the computer.

Next, please see chapter "Basic Setting and Operation" on page 22. It describes how to operate and set up the monitor.

- ✎ If you use a cable to connect the monitor and computer directly, without using a hub, you must use a UTP cross cable. In this case, you cannot access the login page if the setting of web browser is set to "Use proxy server". It must be changed to the "Not use proxy server". For further information, please see the "Web browser setting" of chapter "Appendix" on page 46.
- ✎ When you set up the network of monitor which has a default setting by using the computer, it must be carried out in the network which does not provide any gateways (routers).

## Flash Player

The Flash Player version 9 or later is required when you control the monitor. If your computer does not have, follow to the message on the control page to install the Flash Player. For further product information or installing, see the homepage. (<http://www.adobe.com>)





## Configure the network of computer

When you use the monitor through the network, the IP address of the monitor must have the same IP network number of the existing network. Also it is required to use the same IP network number of the computer to set up the monitor. In the network included with the gateway (router), it must be used with the IP network number specified by the gateway (router).

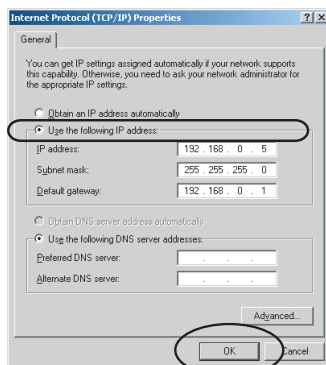
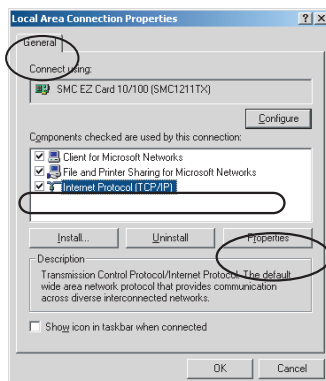
Configure the computer's network by following steps:

### Windows 2000

This example explains how to set the following network address.

IP Address	: 192.168.0.5
Subnet Mask	: 255.255.255.0
Gateway Address	: 192.168.0.1

- 1 Select the **Network and Dial-up Connections** menu from [Start] - [Settings] menu.
- 2 Click the **Local Area Connection** icon with right button of the mouse and then select the **Properties** menu from the popup menu. The right window will appear on the screen.
- 3 Select the **Internet Protocol(TCP/IP)**<sup>\*1</sup> on the General tab of the "Local Area Connection Properties" dialog window and then press the **Properties** button.
- 4 On the "Internet Protocol (TCP/IP) Properties" dialog window, select the **Use the following IP address** button and then enter the IP Address<sup>\*2</sup> and Subnet mask.
- 5 Enter the Default gateway address.  
 ☞ This setting is not needed if the network does not provide the gateway (router).
- 6 Click the **OK** button, the setting window will be closed.



☞ To change the configuration, you may need administrator privileges.

<sup>\*1</sup> Select the "TCP/IP" item of the LAN card you use. If the "TCP/IP" item is not listed in the column, you need to install the TCP/IP protocol. For further information refer to the user's manual of your computer.

<sup>\*2</sup> If the network already has the TCP/IP protocol set, enter with the same IP network number for the IP address and Subnet mask.

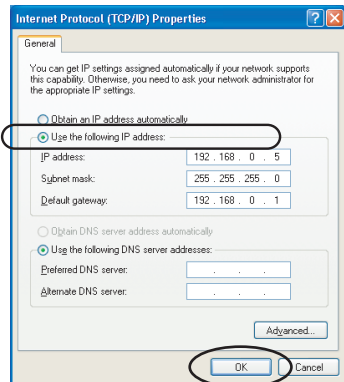
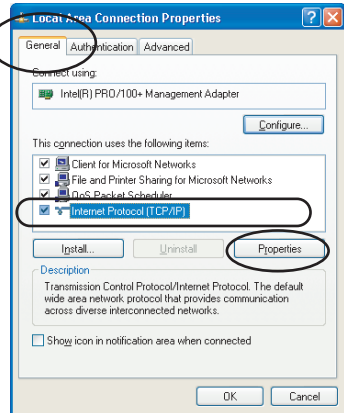
<sup>\*3</sup> There are some ways to set up the network depending on your computer's appearances.

## Windows XP

This example explains how to set the following network address.

IP Address	: 192.168.0.5
Subnet Mask	: 255.255.255.0
Gateway Address	: 192.168.0.1

- 1 Select the **Control Panel** menu from the [Start] menu. Click the **Network and Internet Connection** and then click the **Network** on the control panel.
- 2 Click the **Local Area Connection** icon with right button of the mouse and then select the **Property** menu. The right window will appear on the screen.
- 3 Select the **General** tab on the "Local Area Connection Properties" dialog window. Select the **Internet Protocol(TCP/IP)**<sup>\*1</sup> and then press the **Properties** button.
- 4 On the "Internet Protocol (TCP/IP) Properties" dialog window, select the **Use the following IP address** button and then enter the IP address<sup>\*2</sup> and Subnet mask.
- 5 Enter the Default gateway address.  
 ⚠ This setting is not needed if the network does not provide the gateway (router).
- 6 Click the **OK** button, the setting window will be closed.



<sup>\*1</sup> Select the "TCP/IP" item of the LAN card you use. If the "TCP/IP" item is not listed in the column, you need to install the TCP/IP protocol. For further information refer to the user's manual of your computer.

<sup>\*2</sup> If the network already has the TCP/IP protocol set, enter with the same IP network number for the IP address and Subnet mask.

<sup>\*3</sup> There are some ways to set up the network depending on your computer's appearances.

## **Notice about system construction**

### **In case of installing the monitor with PJ-Net Organizer into the network constructed with the DHCP/BOOTP server.**

This PJ-Net Organizer does not support the DHCP/BOOTP server. The static IP address must be configured by the manual. To use this product in this network environment, set it up so that the DHCP/BOOTP server does not assign the IP address configured to this product for another device on the network. Please contact your network administrator for further information.

Note

---



## **Basic Setting and Operation**

---

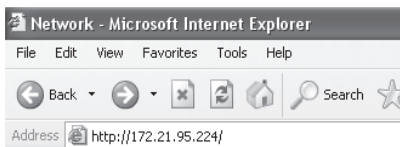
# Basic Setting and Operation

This chapter describes basic operations and settings for controlling the monitor via a network using this product. It is required that computer and monitor are connected to the network and the network address be properly configured.

## Login the setting page of the monitor

### 1 Enter the IP address

Launch the web browser installed in your computer, enter the IP address into the "Address" on the browser and the press the "Enter" key.

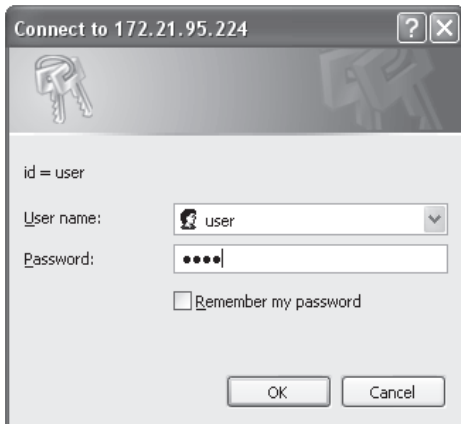


Enter the IP address that you configured in chapter "Network Configuration" on page 13. The default IP address is [192.168.0.2].

### 2 Login

If the setting page has set the password, the authentication window will appear. In this case type "user" onto the **User Name** text area and the login password onto the **Password** text area and then click **OK** button. If you check the item "Remember my password", you can login without entering the password for the next login.

\* The entering User Name must be "user" and it cannot be changed.



[Note]

When accessing the monitor at first time or setting the no password [0000], the auto-login will be performed and the next main setting page is displayed.

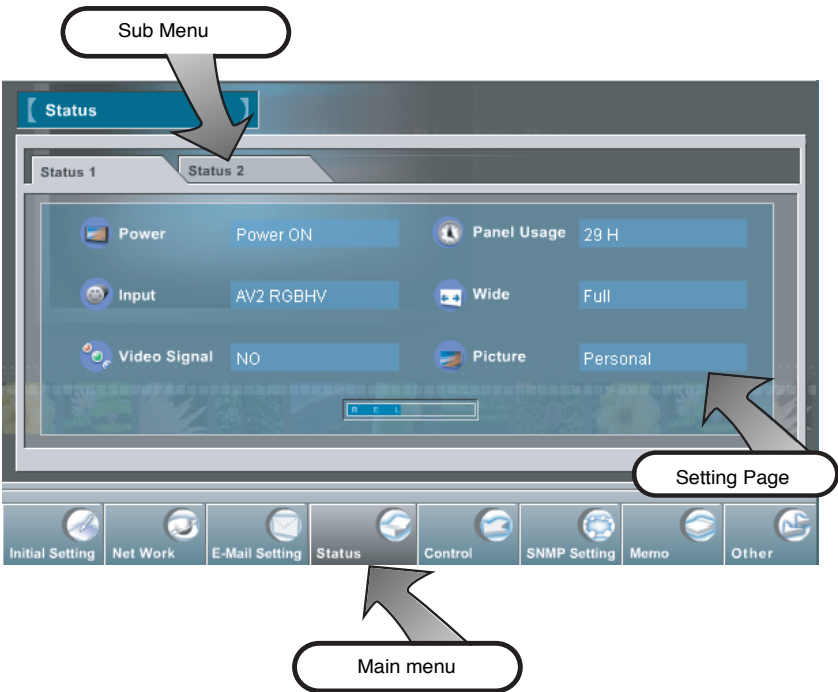
### Important

If you have forgotten current network configuration(IP address, subnet mask, password DNS, and default gateway, you can set them to default value via serial port (RS232C) Refer to page 42

### 3 Display of setting page

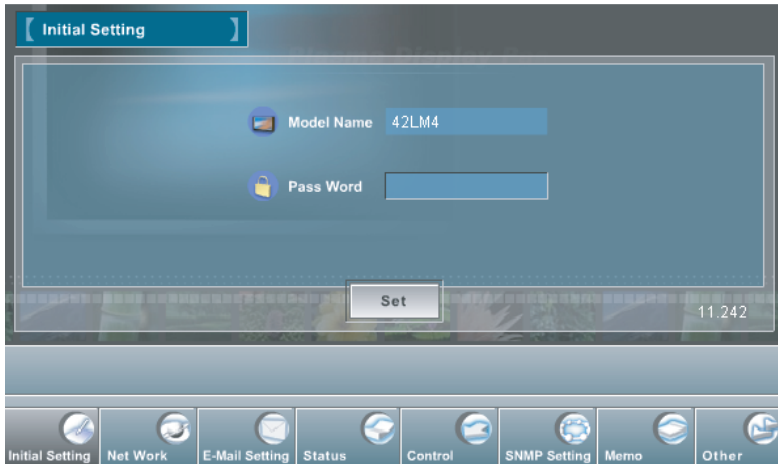
The following setting page of the monitor is displayed. Perform the various kinds of setting through this page. Press a button of Main Menu to display the control or setting page.

- ☛ The main menu which can be set up and control the monitor appears on the lower side of the page.
- ☛ On the setting page, the control and status items for selected menu are displayed. The "Status" page is displayed as the default. This page indicates the current status of the monitor. For further information, please see chapter "Controlling the monitor" on page 31.



## Initial Settings

After installing this product onto the monitor, perform the following basic initial setting. Press the **Initial Setting** button on the main menu to display the initial setting page. The password can be set in this page.



## Password Setting

This page is to set the password to restrict the access from an unauthorized person through the network.

Enter the password onto the text box and press the **Set** button. The PJ-Net Organizer begins restarting and it takes about 40 seconds. The web browser is automatically closed (Quit) after 40 seconds. Access to the login page again. This is to perform the login authentication firmly.

The default password [0000] means no password. You should change password from the default in normal use. When you connect the monitor with this product to the network, you should set a password. Only a four-digit numeric number is valid characters for the password.

## Network Configuration

Press the **Network Setting** button on the main menu. The following setting page is displayed. This page is to set the IP Address, Subnet Mask, Default gateway, DNS (Domain Name Server) and Model ID.

### 1 Configure the network

The IP address and Subnet Mask have been configured already in chapter “1: Installation” on page 7. If you want to change them or configure default gateway\*<sup>1</sup> or DNS\*<sup>2</sup>, perform them in this page. Enter an applicable address number onto each parameter and press the **Set** button.

The PJ-Net Organizer begins restarting and it takes about 40 seconds. The web browser is automatically closed (Quit) after 40 seconds. Access to the login page again.

✓ You must use the network configuration specified by your network administrator. The address must be entered as group with four numbers split by a dot like [192.168.1.101].

### 2 Setting the model ID

You can name\*<sup>3</sup> the monitor for Model ID. By setting this name properly for the DNS server, the monitor can be accessed by using this name instead of the IP address.

For further information, please contact your network administrator.

✓ Up to 10 characters can be registered.

\*1 Set [0.0.0.0] if the network does not provide the gateway (router).

\*2 Set [0.0.0.0] if you do not use the function E-Mail alert.

\*3 If you use the DNS server, register the host name to the DNS server as a monitor name.

You can access with this monitor name from any computers in your network. If you do not use the DNS server, access with the assigned IP address to the monitor.

## E-mail Setting

This product has an E-mail function which can send an alert message to users or an administrator if it detects an abnormality on the monitor or when the panel usage time reaches to setting time. Press the **E-Mail Setting** button on the main menu and follow the below steps.

### 1 E-mail Setting

Select "E-mail Setting" of sub menu, type below items, and press the **Set** button for setting.



#### 1-1 SMTP Server\*1

Type the address of SMTP server for E-mail.

#### 1-2 Administrator Address

Type the E-mail address of administrator. This address is set to "Reply-To" address sent from the monitor.

#### 1-3 Registering and deleting E-mail addresses

Type the E-mail address to which an alert message is sent.

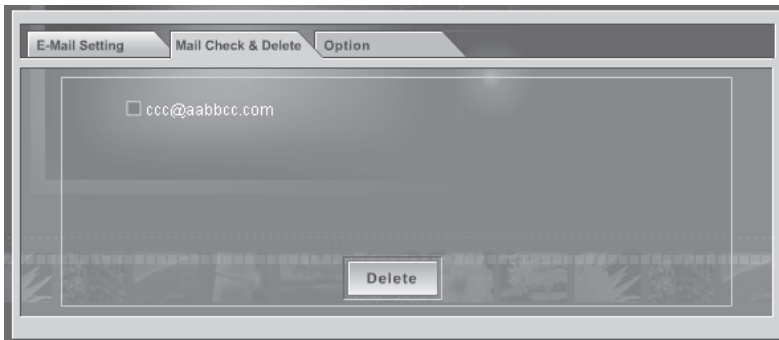
\*1 The SMTP server is a server for sending E-Mail. Please contact your network administrator to have this SMTP server address.

☞ To use the E-Mail function, it must be set the DNS address on the Network Setting page correctly.

☞ You cannot use this E-mail function if the DNS server and SMTP server cannot be used in your network environment. If the SMTP server is located in your LAN (Local Area network), the address set to SMTP server should be specified the in SMTP server located in your LAN. The server located outside of your LAN may not be available for security reason. For further information please contact your network administrator.

## 2 Mail Check and Delete

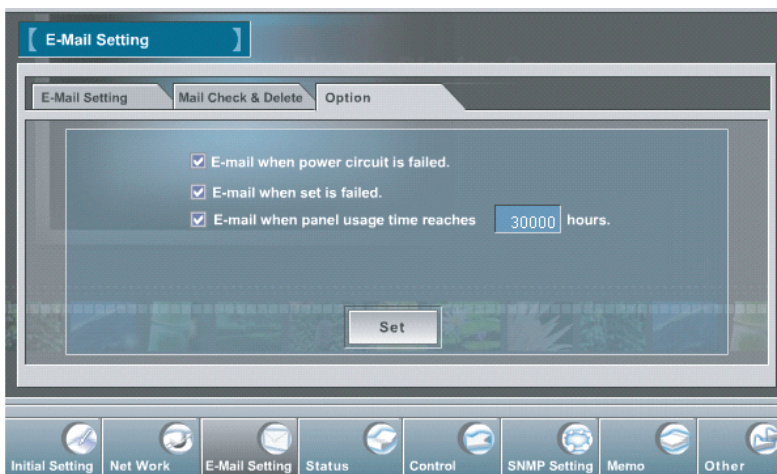
Select "Mail Check and Delete" of sub menu. The registered address is displayed as the "Mail To" address. To delete the registered address, check the box and press the **Delete** button.



## 3 Option (Condition selection for sending alert message)

Select "Option" of sub menu. Type the panel usage time that you want to set, and check the condition items under which alert messages will be sent and press the **Set** button.

Please refer to chapter "Examples :Type and contents of alert messages" described on next page.



## Examples: Type and contents of alert mail

When the monitor has an abnormality, the following alert messages are sent to the registered E-mail address according to your selected condition. Administrator or user can take an efficient action quickly by receiving this message. This is very useful to maintain and service the monitor.

The following are examples of received messages.

### ● When the set has failed:

TITLE: Message from Monitor  
Monitor Model Name: 42LM4  
TCP/IP: 192.168.0.2 Monitor Name: MYLCD-1  
It sends you following message.  
Error! The set has failed

### ● When the internal power circuit has failed:

TITLE: Message from Monitor  
Monitor Model Name: 42LM4  
TCP/IP: 192.168.0.2 Monitor Name: MYLCD-1  
It sends you following message.  
Error! Power circuit has failed

☞ The Monitor was turned off, because the monitor power circuit failed.  
Unplug the monitor from AC outlet and ask servicing to a qualified service personnel.

### ● When panel usage time reaches 30,000 hours:

TITLE: Message from Monitor  
Monitor Model Name: 42LM4  
TCP/IP: 192.168.0.2 Monitor Name: MYLCD-1  
It sends you following message.  
Information! Panel usage time has reached "30,000" hours.



## SNMP Setting

This product can be used for **SNMP (Simple Network Management Protocol)** function. Press the **SNMP Setting** button on the main menu and follow the below steps.

### 1 LCD Information (Setting SNMP Agent)

Select "Information" of sub menu, type the **MIB** of SNMP agent (A contact name and a place of this product) or a community name (reference or setting) and press the **Set** button for setting.

✍ **MIB: Management Information Base**

The screenshot shows the 'SNMP Setting' menu with the 'Information' tab selected. The menu has four sub-tabs: 'Information', 'Trap Send', 'Trap Check & Delete', and 'Trap Option'. The 'Information' tab contains four input fields: 'Contact' (with a red location pin icon), 'Place' (with a yellow location pin icon), 'Community Name (Ref.)' (with a blue globe icon and the value 'public'), and 'Community Name (Set)' (with a blue globe icon and the value 'private'). A 'Set' button is located at the bottom right of the input fields. The bottom of the screen features a navigation bar with icons and labels for 'Initial Setting', 'Net Work', 'E-Mail Setting', 'Status', 'Control', 'SNMP Setting' (which is highlighted), 'Memo', and 'Other'.

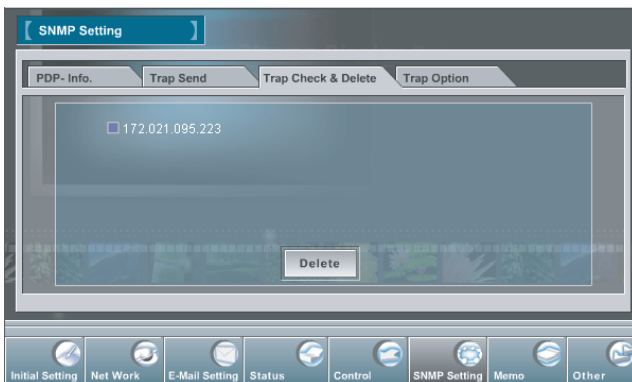
### 2 Trap Send (Setting Trap)

Select "Trap Send" of sub menu, type the host name (IP address) of SNMP manager (PC) and a community name, and press the **Set** button for setting.

The screenshot shows the 'SNMP Setting' menu with the 'Trap Send' tab selected. The menu has four sub-tabs: 'Information', 'Trap Send', 'Trap Check & Delete', and 'Trap Option'. The 'Trap Send' tab contains two input fields: 'Community Name' (with a blue globe icon and the value 'public') and 'Trap' (with a yellow exclamation mark icon). A 'Set' button is located at the bottom right of the input fields. The bottom of the screen features a navigation bar with icons and labels for 'Initial Setting', 'Net Work', 'E-Mail Setting', 'Status', 'Control', 'SNMP Setting' (which is highlighted), 'Memo', and 'Other'.

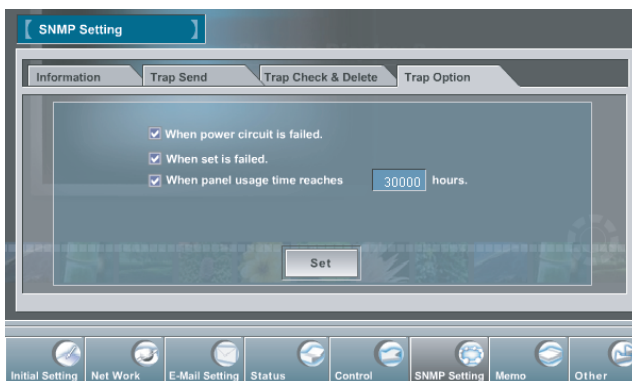
### 3 Trap Check and Delete

Select "Trap Check and Delete" of sub menu. The registered trap is displayed. To delete it, check the box and press the **Delete** button.



### 4 Trap Option (Selection for sending alert message)

Select "Trap Option" of sub menu. Type the panel usage time that you want to set, and check the condition items under which alert messages will be sent and press the **Set** button.



## **Controlling the Monitor**

---

# Controlling the Monitor

## Check the status of monitor

In the "Status" page, you can check the status of the monitor as follows:

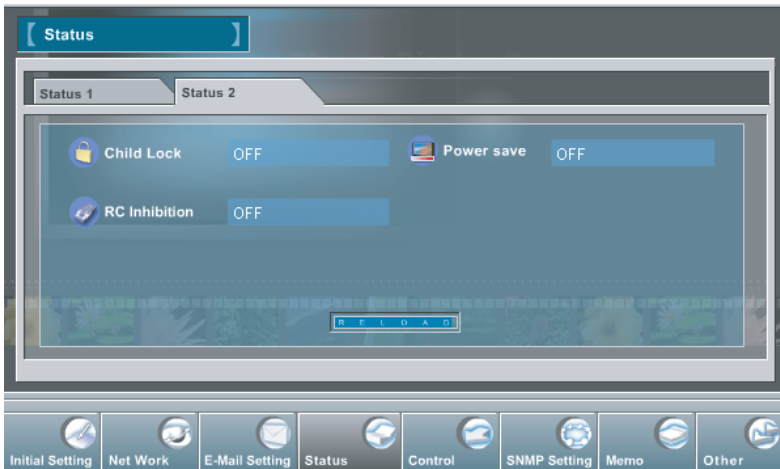
### 1 Status 1



- Power:** **Condition of Power**  
Power ON / Power Error / Power OFF
- Input:** **Input Mode**  
AV1 / RGB / AV2 RGBHV / AV2 YPbPr / AV3 / HDMI / PC
- Video Signal:** **Availability of Input Signal**  
Yes / No
- Panel Usage:** **Accumulated Panel-use Time**  
Example: 163H (hours)
- Wide:** **Wide Mode**  
Auto / Natural / Zoom 16:9 / Title in 16:9 / Zoom 14:9 / Title in 14:9 / Full / Normal
- Picture:** **Condition of Picture**  
Dynamic / Standard / Eco / Personal

✍ The Monitor was turned off in "**Power Error**", because the monitor power circuit failed.  
Unplug the monitor from AC outlet and ask servicing to a qualified service personnel.

## 2 Status 2



**Child Lock:    Key Lock of Monitor**

OFF (Unlock) / On

**RC Inhibition: Button Lock of Remote Control**

OFF (Unlock) / On

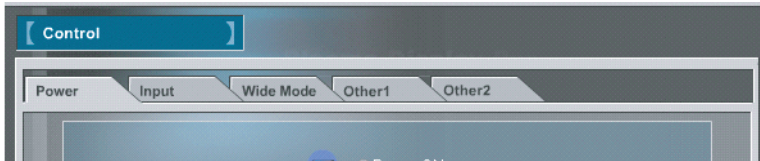
**Power save: The monitor turns into power save mode,  
after 1 minute with no signal.**

Off/On

## Control the monitor

Press the **Control** button on the main menu. The sub menu for controlling the monitor will be displayed on the upper side of the page. When you click each control item, the control page is displayed according to the sub menu you selected.

✍ Please see the owner's manual of the monitor to have the further information of each control item.



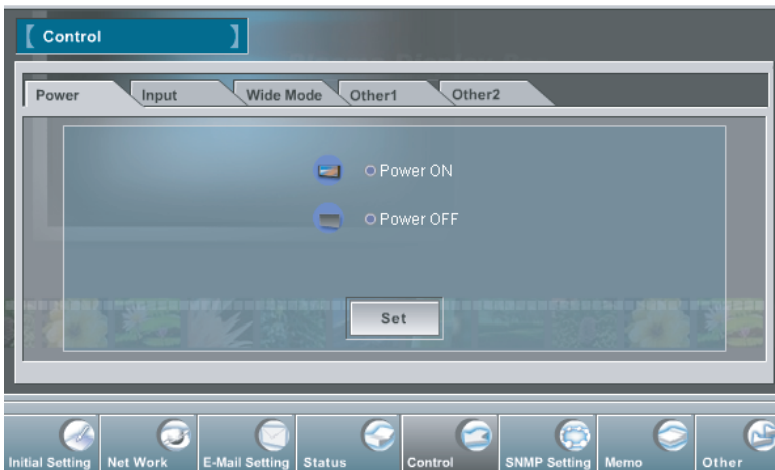
✍ The control page displays valid control items depending on the selected input mode, signal or functions of the monitor you use, therefore, there may be different controls between the described items and actual control items on the page display.

✍ When the monitor is turned off, only the power control is effective; others are inactive.

### 1 Power

Click the **Power** on the sub menu. The control page will be displayed.

Select the power condition with radio button and press the **Set** button to change the power condition.



## 2 Input

Click the **Input** on the sub menu. The control page will be displayed.

Select an input source with radio button and press the **Set** button to change the input source.



## 3 Wide Mode

Click the **Wide Mode** on the sub menu. The control page will be displayed.

Select a wide mode with radio button and press the **Set** button to change the wide mode.

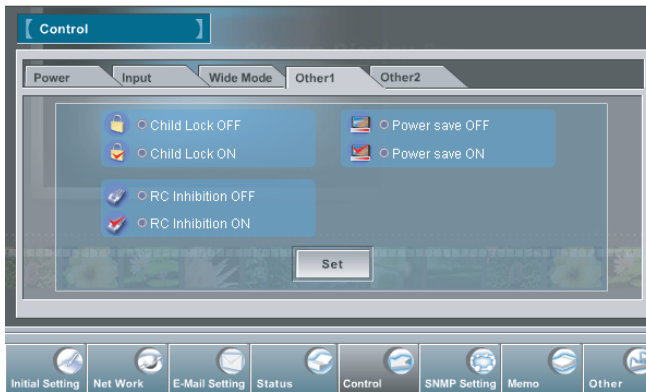


The wide mode cannot be changed depending on the input signal.

#### 4 Other 1

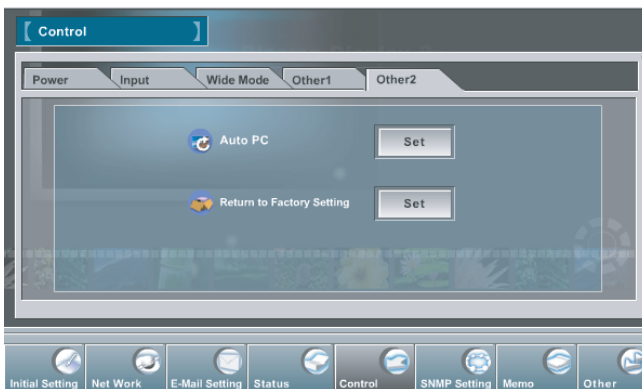
Click the **Other 1** on the sub menu. The control page will be displayed.  
Select the item of Child Lock, RC Inhibition, or Power save with radio button and press the **Set** button to change these functions.

✎ The Child Lock, RC Inhibition, or Power save can be selected independently.



#### 5 Other 2

Click the **Other 2** on the sub menu. The control page will be displayed.  
Press the **Set** button to set Auto PC function or return to factory setting condition.

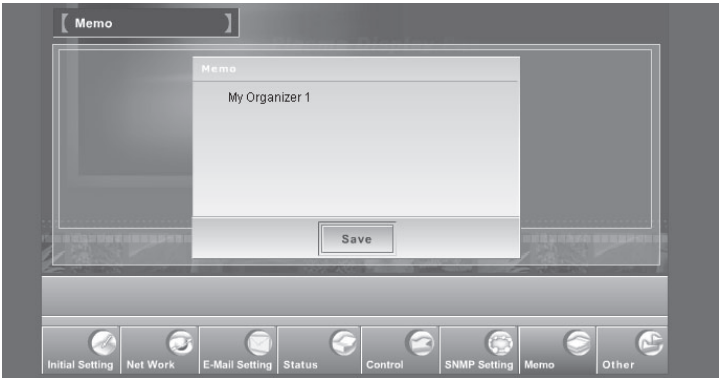




## Make a memo

This function can be used as a memo. Press the **Memo** button on the main menu. The following setting page will be displayed. Press the **Save** button to memorize.

✎ The maximum 127 characters can be typed.



## Use other command

This function can be used to send other command which does not have in the menu of this board. Press the **Other** button on the main menu. The following setting page will be displayed. Type the command and press the **Send** button to control the monitor.

✎ Please see the chapter "4: Serial Port Use" on page 39 or the owner's manual of the monitor for other command. ("Configurations of RS232C Terminal")

✎ The box of Explanation can be used for the title.



Note

---

## Serial Port Use

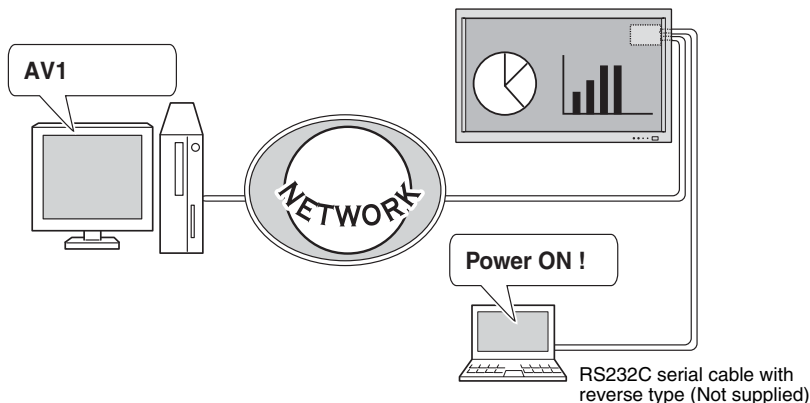
---

# Serial Port Use

This Network Board provides with a serial control port (RS232C) to control the monitor.

## Example of Connection

Control the monitor through network and serial control function.



## Specification and Setting of RS232C Terminal

Terminal : HDB9-PIN

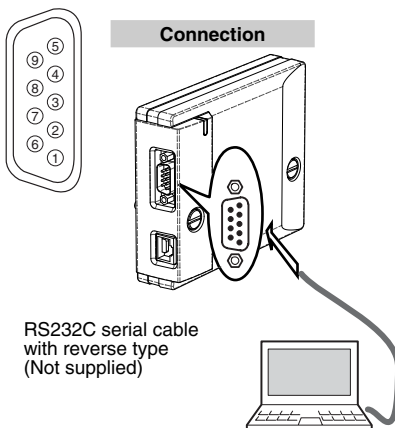
### Pin Configuration

1	No Connect	6	No Connect
2	R x D	7	No Connect
3	T x D	8	No Connect
4	No Connect	9	No Connect
5	Ground		

### Interface (Fixed)

Protocol	RS-232C
Baud rate	19200 bps
Data length	8 bits
Parity	-
Stop bit	1 bit
Flow control	-

### Connection



- ✎ Exclusive driver software for control of this Network board is required. This product does not provide any driver software. Please consult your local dealer.
- ✎ There are 2 types of RS-232C serial cable, Normal and Reverse type. Usually, when connecting between this product and a computer, use Reverse type of serial cable (Serial Cross Cable).

## Command for controlling the monitor

The below commands for controlling the monitor can be used.

**Functional Execution Command Table**

Command	Item	Comment
C00	POWER ON	
C01	POWER OFF	
C23	Wide "Auto" direct	
C24	Wide "Natural" direct	
C25	Wide "Zoom 16:9" direct	
C26	Wide "Title in 16:9" direct	
C27	Wide "Zoom 14:9" direct	
C28	Wide "Title in 14:9" direct	
C29	Wide "Full" direct	
C0F	Wide "Normal" direct	
C30	Picture	Toggle (Dynamic, Standard, Eco, Personal)
C70	AV1 direct	
C71	RGB direct	
C72	AV2 RGBHV direct	
C73	AV2 YPbPr direct	
C74	AV3 direct	
C75	HDMI direct	
C76	PC direct	
C64	PC Auto adjust	
C92	Factory settings	
CF PSAVE ON	Power save ON	
CF PSAVE OFF	Power save OFF	
CF CLOK ON	Child lock ON	
CF CLOK OFF	Child lock OFF	
CF DEARMCY	RC inhibition OFF	
CF DEARMCN	RC inhibition ON	

### EXAMPLE : POWER ON (C00)

	FUNCTION CODE / END CODE
HEX	43h 30h 30h 0Dh 0Ah
ASCII	'C' '0' '0' [CR] [LF]

If you forgot current network configuration, (IP address, subnet mask, password DNS, and default gateway), you can set them to default value via the serial port (RS232C).

## **How to set Network configuration on network board to default**

- 1** Send below command (ASCII) to network board  
W\_DEFAULT + [CR]    “\_” means space.
- 2** Network board will be rebooted. It takes about 40 seconds.
- 3** Network board starts with default network configuration.

## Appendix

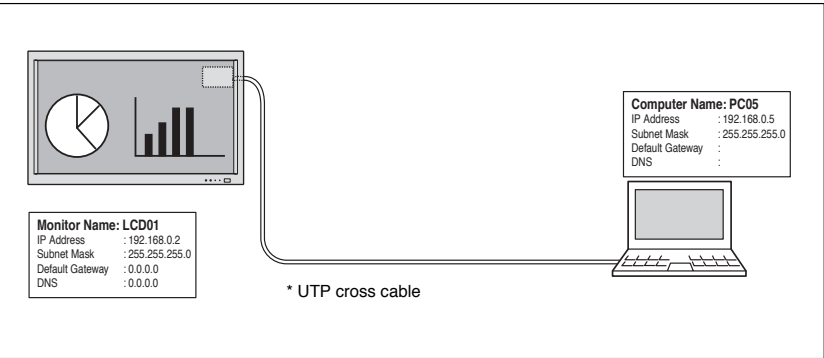
---

# Appendix

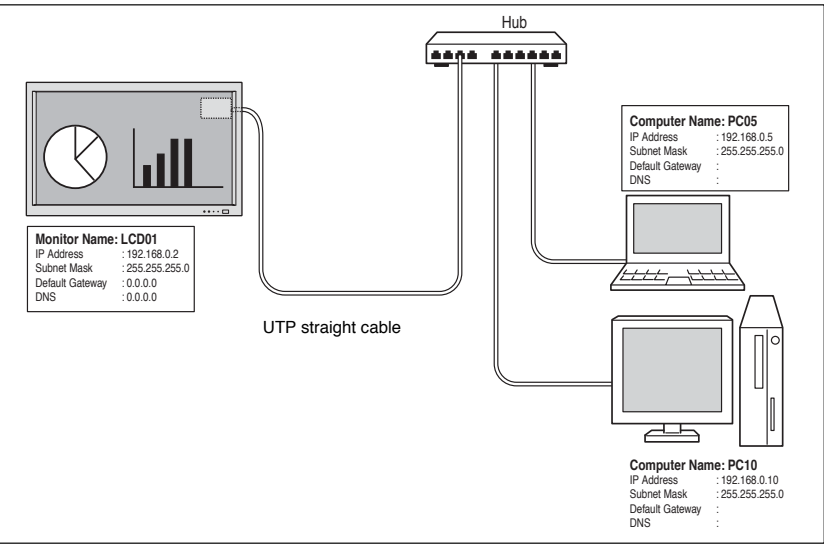
## Examples of Connection

### Direct connection

Connect the monitor (LCD01) to the control computer (PC05) directly.



Connect the monitor (LCD01) to the control computer (PC05) via the hub.

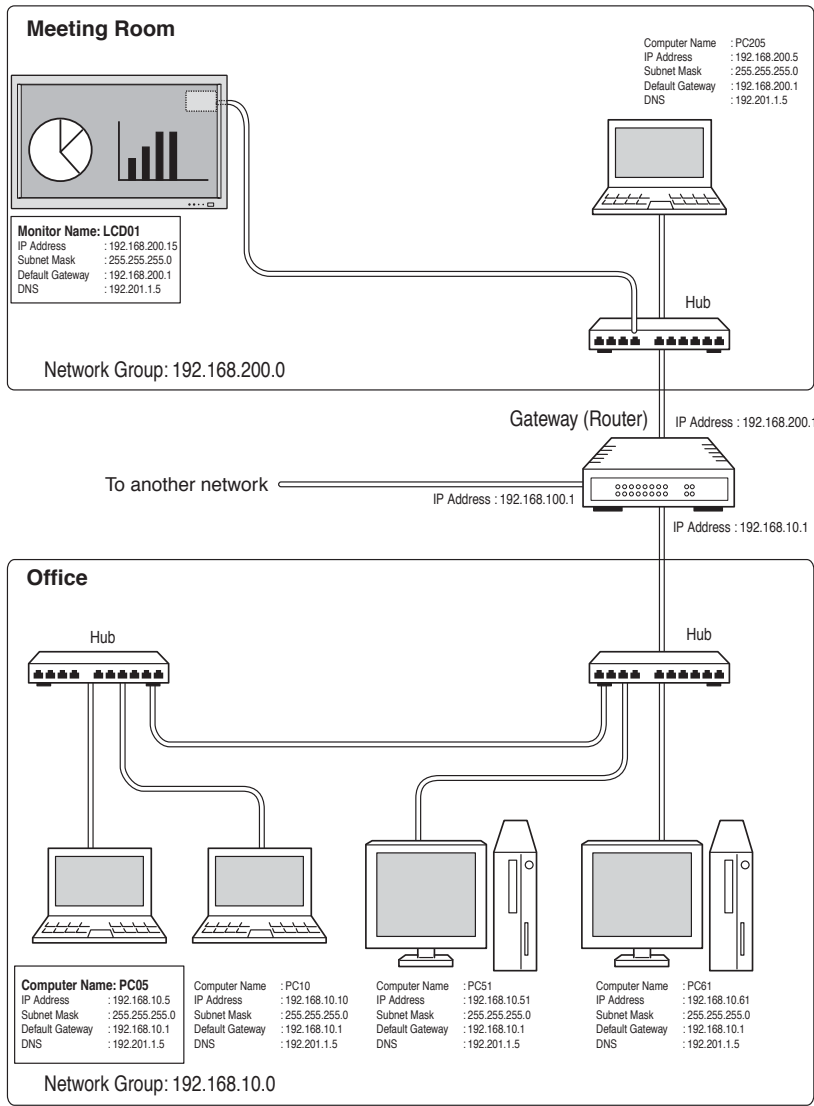


When the monitor is connected to the computer directly without hub, the UTP cross cable should be used .



The gateway (Router) installed in the network

Connect the monitor (LCD01) to the control computer (PC05) via the gateway.

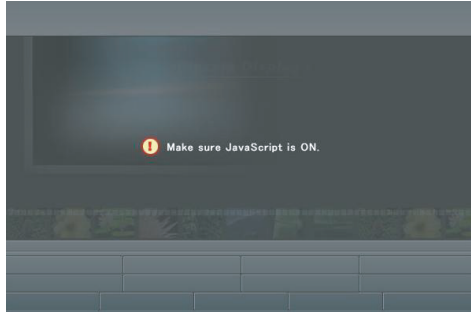


## Web browser setting

This product is designed to enable the monitor to be set up and controlled from an Internet web browser. Depending on the preference settings of the web browser, some control functions may not be available. Please make sure that the following functions are set up properly in the web browser.

### Active Script/JavaScript enable


There are some control items used with the JavaScript function in the setting pages. If the web browser is set not to use this JavaScript function, it may not control the monitor properly. In this case, the following warning message will be displayed on the top of the page. To enable the JavaScript, please see further instructions on the next page.



### Proxy setting

In some cases, your web browser is set up to use the proxy server for the internet or intranet connection. In this case, when you install this product into the local network, you should set up the proxy setting of web browser preference correctly. Especially when connecting the monitor and computer with a UTP cross cable directly, or when the network does not provide the proxy server, make sure that “not use proxy server” is set up in your web browser preference. To set up the proxy setting, please see further instructions on next page.

---

 There are various ways to change your browser preferences depending on the version or applications. Please see the setting instructions on next page for example and also refer to on-line help of your web browser.

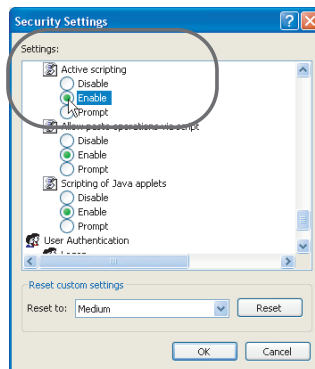
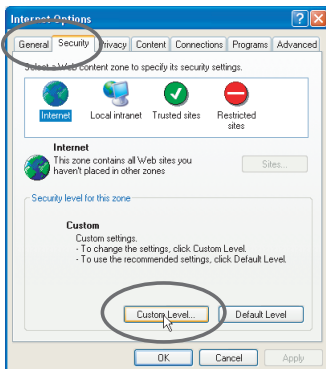
## Examples: OS/Browsers

### Windows XP Professional

#### Internet Explorer v.6.0

##### ActiveScript setting

Select the Internet **Options** menu from the **Tool** menu on the web browser and then select **Security** tab and click **Customize Level...** button. On the security setting window, scroll down and find the **Scripting** item, make sure that “Enable” is selected in item **Active Scripting**.



### Proxy setting

Select the Internet **Options** menu from the **Tool** menu on the web browser and then select Connection tab and click **LAN Settings** button. Properly set up your web browser's the proxy server settings according to the local area network environment to which the monitor is connected.

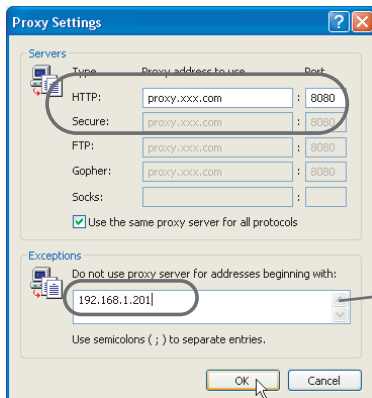
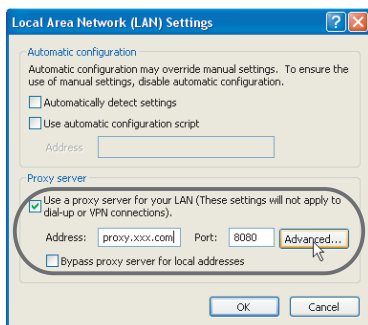
#### - Using proxy server

To use an external internet connection from the local area network, check the item **Use a proxy server** and enter the proxy server address and port correctly in the proxy settings window. For further instruction please consult your network administrator.

#### - Not using proxy server

Uncheck the item **Use a proxy server**.

If you connect the monitor to the computer directly with UTP cross cable, this must be unconnected.



## Product specification

Type .....	Pj-Net Organizer	
LAN interface .....	Applicant regulation	IEEE802.3 (10Base-T) IEEE802.3u (100Base-TX)
	Data transfer speed	10Mbps/100Mbps
	data transfer mode	Half duplex/Full Duplex
	Terminal	8-pin modular (RJ-45)
Network protocol	TCP/IP specification	TCP/IP
Serial interface	RS232C	
	Baud rate	19.2Kbps (Fixed)
	Terminal	D sub 9-pin
Power source .....	Supplied from the LCD monitor	
Power consumption .....	3.0 watts	
Dimensions (W x H x D) .....	4.2" x 1.4" x 5.3" (107 x 34.9 x 135mm)	
Weight .....	0.92 lbs (420 g)	
Operating temperature .....	41°F ~ 95 °F (5°C ~ 35 °C)	
Storage temperature .....	14°F ~ 140°F (-10°C ~ 60°C)	
Accessories	Owner's Manual	

\* The specifications are subject to change without notice.

### Applicable monitor model

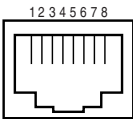
CE42LM4WPN-NA, CE42LM4N-NA

\* The above model is the applicable monitor which can be connected for this product. For further information please consult your local dealer.

# Port Specification

## LAN port specification

8-pin modular connector (RJ-45)



pin No.	Signal	Function
1	TX+	Transfer data (+)
2	TX-	Transfer data (-)
3	RD+	Receive data (+)
4	(not used)	
5	(not used)	
6	RD-	Receive data (-)
7	(not used)	
8	(not used)	

MAC Address

## MAC Address

The MAC address is indicated on the rating label.

### NOTES ON Lithium Battery (CALIFORNIA USA ONLY)

This product uses a Lithium Battery which contains Perchlorate Material - special handling may apply. See [www.dtsc.ca.gov/hazardouswaste/perchlorate](http://www.dtsc.ca.gov/hazardouswaste/perchlorate)

### Notas acerca de pilas de litio(SOLO PARA CALIFORNIA, EE.UU.)

Este producto usa una pila de litio que contiene el material perclorato – puede ser necesario una manipulación especial.

Consulte la página [www.dtsc.ca.gov/hazardouswaste/perchlorate](http://www.dtsc.ca.gov/hazardouswaste/perchlorate)

Note

---

